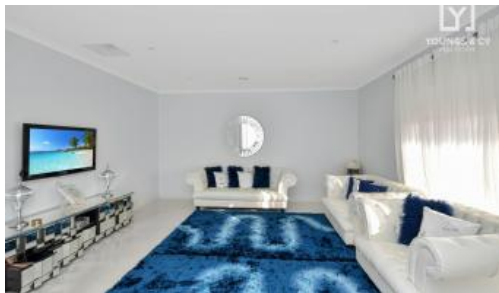




**51 Wendouree Dr, Kialla**



## Spacious Family Home set on a Large 998m2 Block!

With all of Kialla Lakes Estate blocks currently sold, the demand for modern homes like this one just keeps on increasing. This large home has 4 double bedrooms, separate lounge room enormous kitchen meals and family room + rumpus area. There is even a Butlers kitchen and very tasteful decorating throughout. A truly stylish ensuite bathroom of the master bedroom plus walk in robe, each of the bedrooms have generous built in robes and the home is fully catered for with ducted heating and cooling systems. The owners have even installed an outdoor kitchen in their entertaining area. If you are after a modern home with big living areas and plenty of room for the kids in the back yard (or a big vegie patch) then call Glenn Young 0438579993 for an inspection.

The above information provided has been furnished to us by the vendor/s. We have not verified whether or not that information is accurate and do not have any belief in one way or the other in its accuracy. We do not accept any responsibility to any person for its accuracy and do no more than pass it on. All interested parties should make and rely upon their own inquiries in order to determine whether or not this information is in fact accurate.

 4  2  2

<b>Price</b>	\$687,000
<b>Property Type</b>	Residential
<b>Property ID</b>	3429
<b>Land Area</b>	998 m2

### Agent Details

Glenn Young - 0438 579 993

### Office Details

Shepparton  
123 Wyndham St Shepparton VIC  
3630 Australia  
03 5820 8777